

NASH VectraPaks



NASH VectraPaks

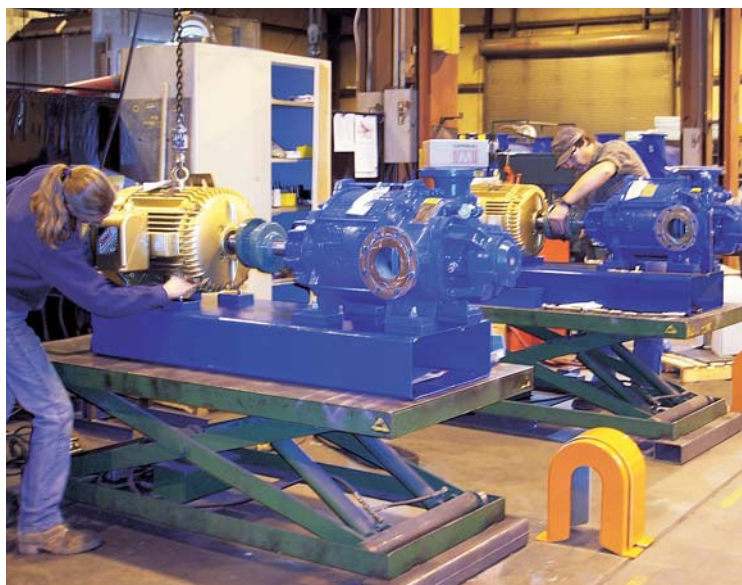
Vectra Packages

- Pre-engineered
- Quick delivery
- Plug & Play
- Available in Iron and Stainless Steel

Simplify your installation with a packaged system from Gardner Denver Nash. Pre-engineered NASH VectraPaks are provided with all of the necessary components assembled and piped. You receive a complete system that is ready to install.

Mounted pumps, once-through and fully recirculated systems are available in various sizes, and in iron or all stainless steel construction.

Vacuum levels from 0 to 29" (to 31 mbar abs)

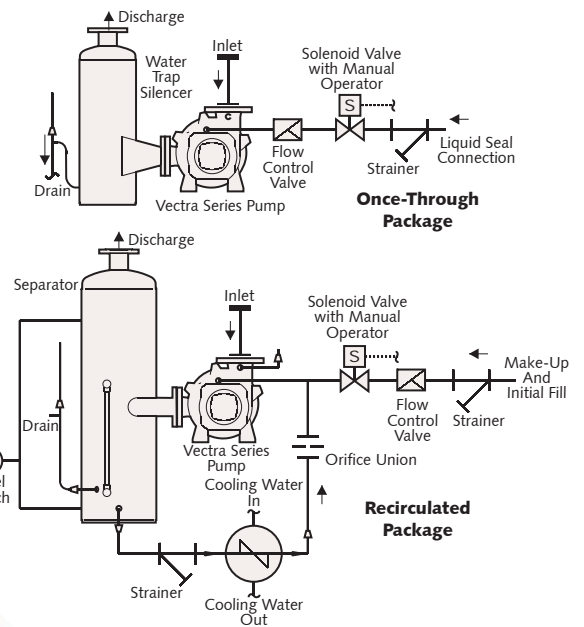
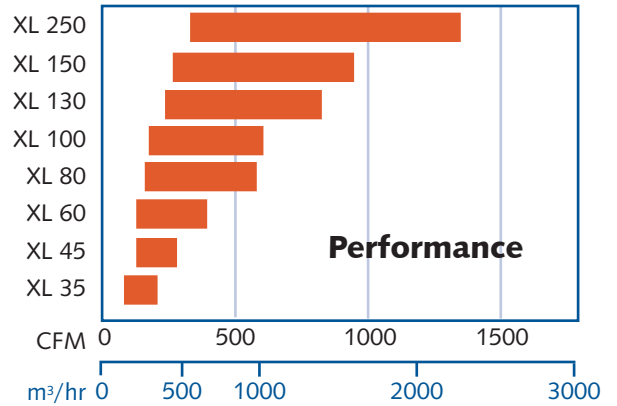
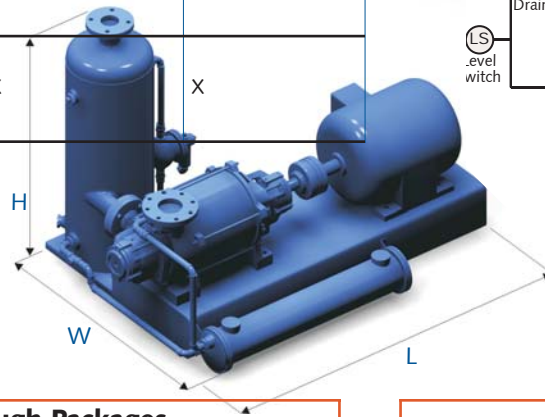


	Mounted Pumps	Once-Through Packages	Recirculated Packages
Use When...	...replacing an existing system or where accessories can be reused	...contamination is not a problem and the supply of seal liquid is plentiful	...liquids and gases are hazardous or toxic and where contamination is a concern
Benefits	<ul style="list-style-type: none"> • Lowest initial cost 	<ul style="list-style-type: none"> • Simplicity • Low initial cost 	<ul style="list-style-type: none"> • Low water consumption • Condensable inlet gases may be recovered • Seal liquid contained and isolated from non-hazardous coolant systems
Standard Components	<ul style="list-style-type: none"> • Pump • Base • Flexible coupling • Coupling guard • TEFC motor 	<ul style="list-style-type: none"> • Pump • Base • TEFC motor/drive • Seal water accessories: solenoid valve, flow control valve and strainer • Water trap silencer 	<ul style="list-style-type: none"> • Pump • Base • TEFC motor/drive • Seal water accessories • ASME-coded separator with sight glass • Heat exchanger • Automatic makeup system

Vectra Feature	Benefits
External mechanical seals	Flexibility and ease of maintenance
Direct drive speeds for 50/60 Hz motors	For worldwide use
Extended pressure ratings	Ability to handle tough applications where backpressure is required
Conical design	Better ability to handle water/particulate slugs and residual gases
One moving part	Long term reliability
Variable port design	High efficiency
Patented gas scavenging	Increased performance at high vacuum levels
Factory performance tested	Trouble free start-up and operation
Backed by 2 year warranty and over 100 years of vacuum and compressed gas experience	Peace of mind

NASH Standardized Solutions

Options	Once-Through	Recirculated
High vacuum flow controls	X	X
Inlet check valve	X	X
Inlet isolation valve	X	X
External lobe purge	X	X
Mechanical seals (standard or stainless steel)	X	X
Relief valve	X	X
Vacuum gauge	X	X
Flow switch	X	
Partial recirculated seal	X	
Seal line isolation valve	X	
Spray nozzle	X	
Variable speed drive	X	X
Motor enclosures: • ODP • TEFC (standard) • TEFC-SD • Explosion proof	X	X
Motor efficiency: • EPACT (standard) • Premium	X	X
Motor voltages: • 230/460 (standard) • 575	X	X



Installation Dimensions

millimeters in blue

Once-Through Packages					
Model	L	W	H	Inlet	Discharge
XL 35	49	35	38	3	2
	1245	889	965	76	51
XL 45	57	35	38	3	2
	1448	889	965	76	51
XL 60	64	40	47	4	3
	1626	1016	1194	102	76
XL 80	70	40	47	4	3
	1778	1016	1194	102	76
XL 100	73	45	54	4	4
	1854	1143	1372	102	102
XL 130	80	45	54	4	4
	2032	1143	1372	102	102
XL 150	81	48	54	6	4
	2057	1219	1372	152	102
XL 250	94	59	76	6	6
	2388	1499	1930	152	152

Recirculated Packages					
Model	L	W	H	Inlet	Discharge
XL 35	49	45	30	3	2
	1245	1143	762	76	51
XL 45	57	45	30	3	2
	1448	1143	762	76	51
XL 60	64	50	47	4	3
	1626	1270	1194	102	76
XL 80	70	50	47	4	3
	1778	1270	1194	102	76
XL 100	73	57	59	4	4
	1854	1447	1499	102	102
XL 130	80	57	59	4	4
	2032	1447	1499	102	102
XL 150	81	59	59	6	4
	2057	1499	1499	152	102
XL 250	94	60	63	6	6
	2388	1524	1600	152	152

Other NASH Products

TC/TCM Integral 2 stage liquid ring pumps with improved performance at vacuum levels down to 0.8" HgA (27 mbar)
Designed to handle large amounts of liquid carryover without difficulty
Capacity of 100 to 2,240 CFM with vacuum to 0.8" HgA
Capacity of 170 to 3,740 m³/h with vacuum to 27 mbar



Vectra Liquid ring vacuum pumps and compressors
Available in feature rich budget designs (XL or GL)
Designed to handle high back pressure requirements
Capacity of 115 to 2,860 CFM with vacuum to 29+ HgV
Capacity of 195 to 4,860 m³/h with vacuum to 31 mbar abs



2BE3/P2620 Large liquid ring vacuum pumps with superior corrosion resistance
Top discharge capability which eliminates need for trench
Self-recirculating seal water, reducing need for external seal water source
Capacity of 4,000 to 23,000 CFM with vacuum to 24" HgV
Capacity of 6,800 to 39,000 m³/h with vacuum to 200 mbar abs



Steam Jet Ejectors Sizes range from one-inch (25mm) to 78-inch (2 meters) inlets
Capacities range from 20 CFM to 20,000 CFM
Capacities range from 34 m³/h to 34,000 m³/h
Multi-stage system pressures as low as 0.001 mm HgA



Compressors Wide range of liquid ring compressors designed for many applications. Rugged and reliable, they can handle highly toxic, explosive and corrosive gases
Specifically developed for applications such as flare-gas, Chlorine and Vinyl Chlorine Monomer (VCM) recovery
Capacity of 60 to 2,200 SCFM with pressure to 200 PSIG
Capacity of 100 to 3,740 m³/h with pressure to 15 bar abs
Single and two stage models available



NASH

Div. of Gardner Denver

9 Trefoil Drive

Trumbull, CT 06611 U.S.A.

phone: 800 553 NASH

+1 203 459 3900

fax: +1 203 459 3988

nash@gardnerdenver.com

www.GDNash.com

