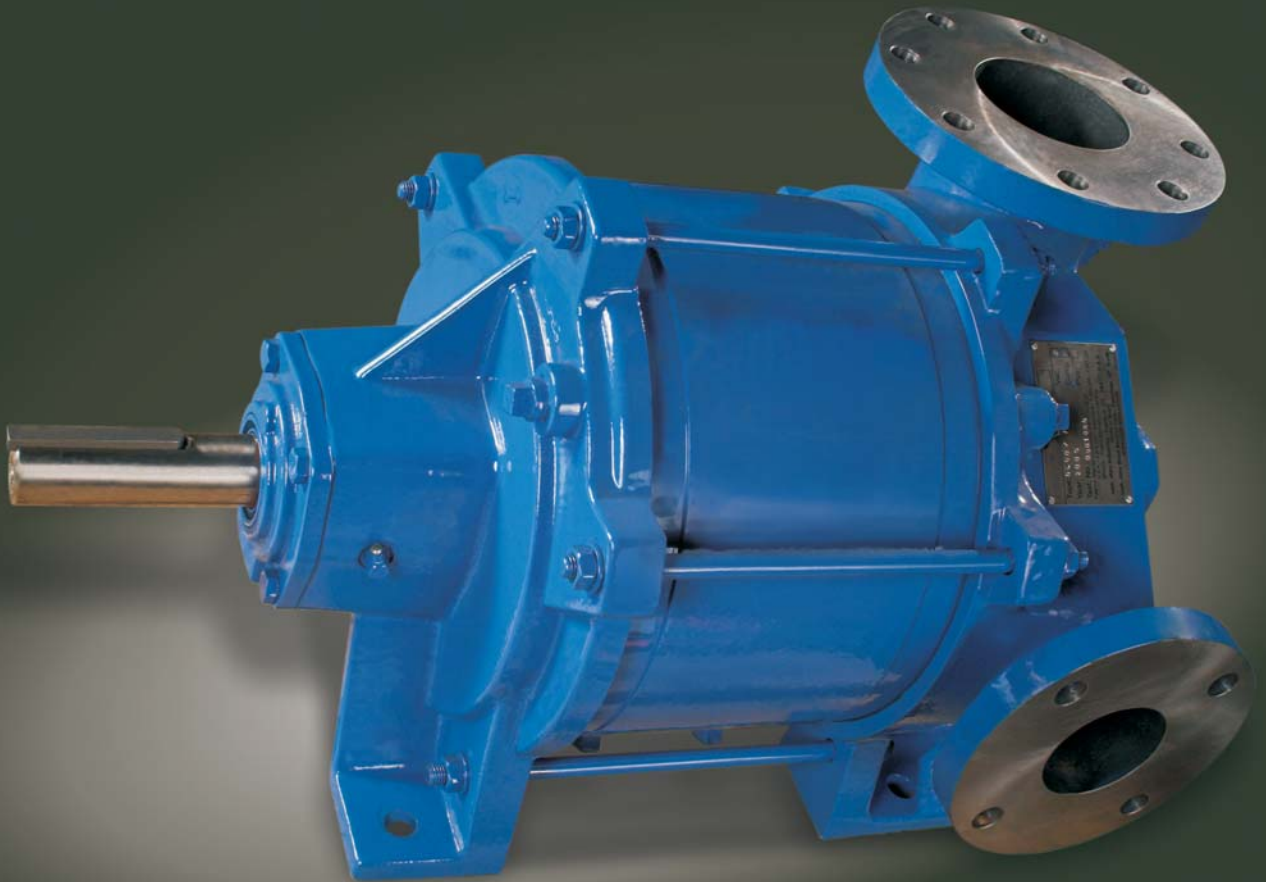


**Vectra GL**  
**Liquid Ring Vacuum Pumps and Compressors**



# NASH Vectra GL Vacuum Pumps & Compressors

## Industry Workhorses

NASH liquid ring vacuum pumps produced by Gardner Denver Nash have been known for more than 100 years as tireless workhorses, designed to stand up to the rigorous, nonstop demands of the harshest industrial environments. Built better than industry standards, NASH pumps are known for their reliability.

Vectra GL vacuum pumps and compressors, created for a wide range of general industrial applications, combine the highest standard of this reliability with a new level of ingenuity. Gardner Denver Nash employs advanced design technologies to achieve optimum performance and unprecedented production efficiencies. As a result, Vectra GL pumps are economical and provide great value to our customers.

Designed from the ground up based on customer defined market requirements; and the input from R&D, manufacturing, marketing, and most importantly, process engineers, Vectra GL pumps are a revolutionary line of pumps tough enough to be branded NASH.

These pumps include technological advancements such as a patented cone design and rotor configuration.

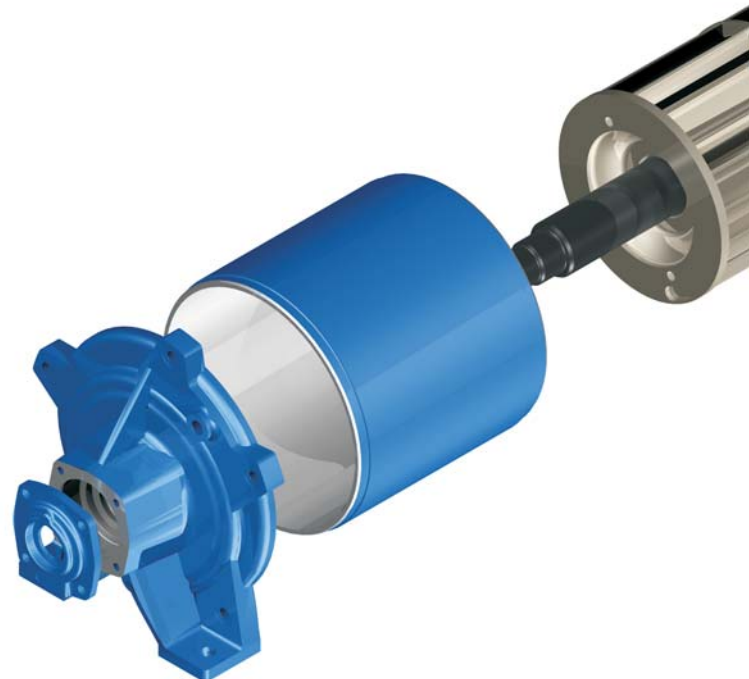
## Vacuum technology for general process industry

Vectra GL pumps are designed for general industry applications. They are available in ductile iron only. Key elements of the design are the improved cone angles, which decrease the size of the pump, and NASH patented Gas Scavenging Technology, which dramatically improves pump performance at high vacuum levels.

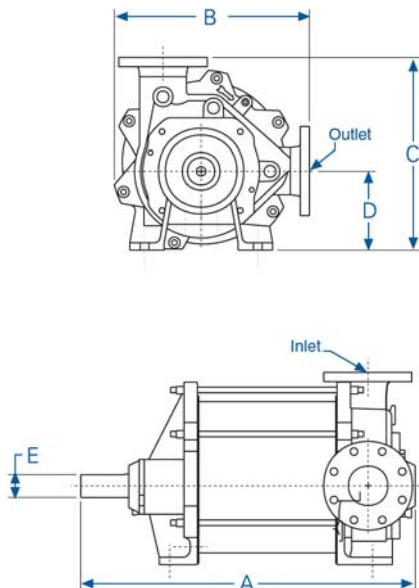
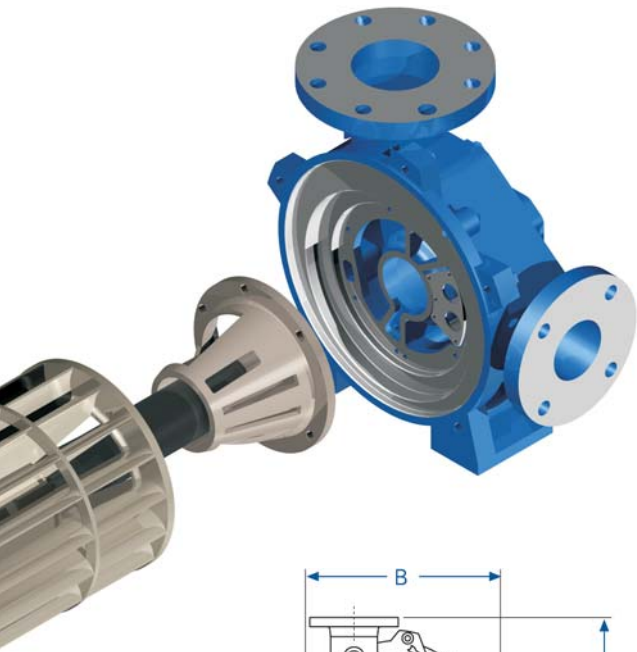
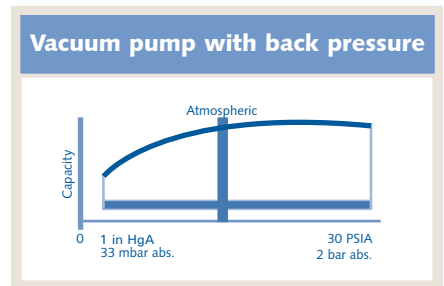
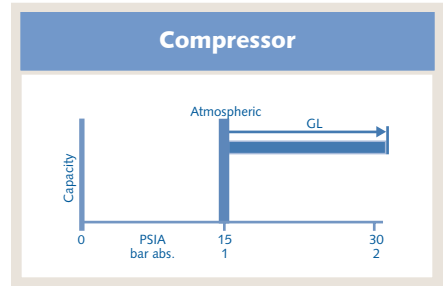
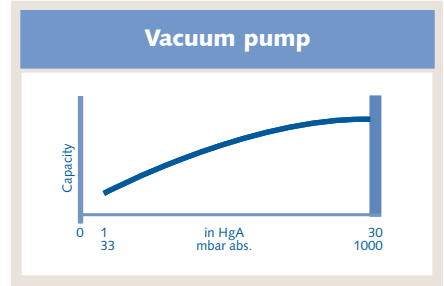
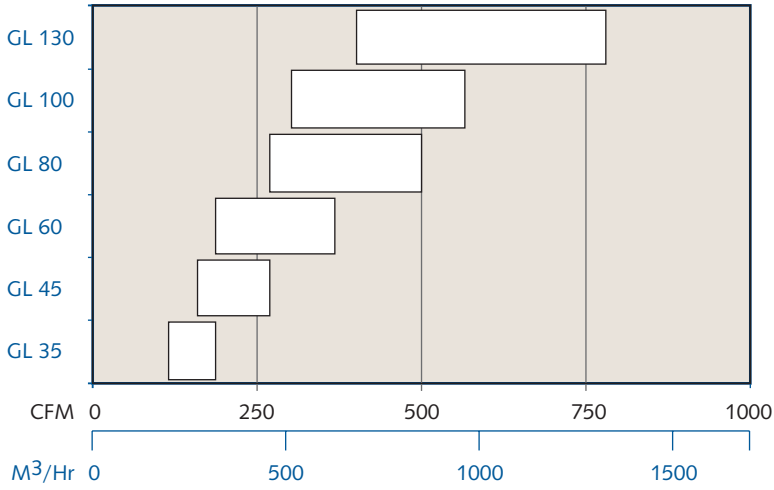
### Basic specifications

Vacuum range	0-29 in Hg vac/ to 33 mbar abs.
Mechanical seals	Single
Differential pressure capability	15 psi/ 1 bar
Compressor pressure	15 psig/ 2 bar abs.
Hydrotest pressure	75 psig/ 6 bar abs. standard
Construction material	Ductile iron

Features	Benefits
Compact design	Less floor space required
Built-in mechanical seals	No shaft leakage
Global product design	Direct drive speeds for 60 Hz & 50 Hz motors
Conical design	Better ability to handle water/particulate slugs
One moving part	Long term reliability
Variable port design	High efficiency
Lobe purges	Reduce erosion wear
NASH patented Gas Scavenging	Increased performance at high vacuum levels
Redesigned cone angle	Reduced pump length
Optimum design using finite element analysis	Improved efficiency, performance and value
100% performance tested	Trouble-free start-up and operation
Backed by 2 year warranty and over 100 years of vacuum and compressed gas experience	Peace of mind



## Performance



## Dimensions

mm in blue

Pump	A	B	C	D	E	Inlet	Outlet
GL 35	21 533	13.4 340	14 356	6 152	1.3 32	3 in. FLG. 80mm FLG.	2 in. FLG. 50mm FLG.
GL 45	24 610	13.4 340	14 356	6 152	1.3 32	3 in. FLG. 80mm FLG.	2 in. FLG. 50mm FLG.
GL 60	27 686	17 432	16 406	6.8 173	1.6 40	4 in. FLG. 100mm FLG.	3 in. FLG. 80mm FLG.
GL 80	31 787	17 432	16 406	6.8 173	1.6 40	4 in. FLG. 100mm FLG.	3 in. FLG. 80mm FLG.
GL 100	29 737	19 483	19.5 495	8 203	1.9 48	4 in. FLG. 100mm FLG.	4 in. FLG. 100mm FLG.
GL 130	33 838	19 483	19.5 495	8 203	1.9 48	4 in. FLG. 100mm FLG.	4 in. FLG. 100mm FLG.

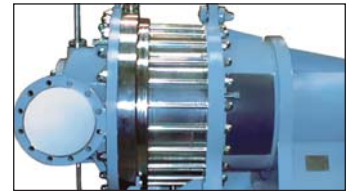
All dimensions are approximate

## Other NASH Products

**2BV** Compact liquid ring vacuum pumps built for serious cost savings  
Use up to 50 percent less water than other liquid ring pumps  
Monoblock and pedestal designs available  
Capacity of 4 to 350 CFM with vacuum to 29+ " HgV  
Capacity of 7 to 595 m<sup>3</sup>/h with vacuum to 31 mbar abs.



**GARO Compressors** Highly rugged and reliable compressors that can handle highly toxic, explosive and corrosive gases  
Specifically developed for applications such as flare-gas, chlorine and Vinyl Chlorine Monomer (VCM) recovery  
Capacity to 2,200 SCFM with pressure to 200PSIG  
Capacity of 100 to 3,400 m<sup>3</sup>/h with pressures to 15 bar abs.  
Single and two stage models available



**2BE3/P2620** Large liquid ring vacuum pumps with superior corrosion resistance  
Top discharge capability which eliminates need for trench  
Self-recirculating seal water, reducing need for external seal water source  
Capacity of 4,000 to 23,000 CFM with vacuum to 29+ " HgV  
Capacity of 6,800 to 39,000 m<sup>3</sup>/h with vacuum to 31 mbar abs.



**TC/TCM** Integral two stage liquid ring pumps with improved performance at vacuum levels down to 0.8" HgA / 27 mbar  
Designed to handle large amounts of liquid carryover without difficulty  
Capacity of 100 to 2,200 CFM with vacuum to 0.8" HgA  
Capacity of 170 to 3,740 m<sup>3</sup>/h with vacuum to 27 mbar



**Steam Jet Ejectors** Sizes range from one-inch (25mm) to 78-inch (2 meters) inlets  
Capacities range from 20 CFM to 20,000 CFM  
Capacities range from 34 m<sup>3</sup>/h to 34,000 m<sup>3</sup>/h  
Multi-stage system pressures as low as 0.001 mm HgA



**Gardner Denver**  
**Liquid Ring Pump Division**  
9 Trefoil Drive  
Trumbull, CT 06611 U.S.A.  
phone: 1 800 553 NASH  
+ 1 203 459 3900  
fax: + 1 203 459 3988  
nash@gardnerdenver.com  
GardnerDenverNash.com