

## Product Information Peristaltic pump 2.8 l/hr

### The inexpensive dosing solution

Peristaltic pumps are used in the field of water treatment whenever low-pulsation dosing is required at low pressure. As compared to diaphragm dosing pumps, peristaltic pumps are characterized by insensitivity to vapor locks in the medium. Typical applications include the dosing of sodium hypochlorite, hydrogen peroxide and hydrochloric acid as well as the dosing of e.g. flocculants or cleaning agents.

### Simply sophisticated

The most important service part of a peristaltic pump is the pump hose. For this reason, the Lutz-Jesco peristaltic pump 2.8 l/hr is designed to maximise the service life of the hose and to ensure simple changing of the hose with a minimum of effort.

Spring-loaded rollers protect the hose against excessive pressure when the pressure line is clogged and act as an internal safety valve. The pressure rollers also give way to deposits inside the hose.

The spring can be put up and used as a handling aid when changing the hose. This procedure effectively prevents crush hazards during hose replacement.

The wetted materials are suitable for the standard chemicals used in water treatment: acids, alkalis and most of the disinfectants.

Wall mounting is implemented by clipping the pump on a profile rail. Several pumps can be mounted on one profile rail. A version without housing can be delivered for installation in customer-specific devices.

### In short

- Rotor supported on two sides
- Spring-loaded pressure rollers
- Hose change without tools
- Mounting on profile rails
- Drain connection



### Technical data

Delivery rate	2,8 l/hr
Accuracy	± 10% (with a new hose)
Manometric pressure	1,5 bar
Capillary rise	300 mbar
No. of revolutions	30/ min
Voltage	230 V 50 Hz
Protection class	IP 65
Power input	max. 5 W
Duty time	100%
Environment temperature	5...40 °C
Medium temperature	5...50 °C
Dimensions (W x H x D)	106 x 157 x 112 mm
Weight	ca. 750 g
Hydraulic connections	for PE or PVC-hose 4/6 mm

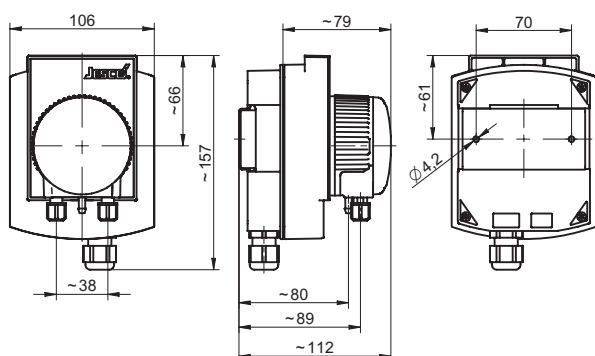
## Product Information Peristaltic pump 2.8 l/hr

### Model variant

Product name	Material	Order no.
Peristaltic pump	NORPRENE®, MABS, SAN	11001000

NORPRENE® is a registered trademark of Sain-Gobain Performance-Plastics.

### Dimensional figure



All measurements are given in mm

### Scope of delivery

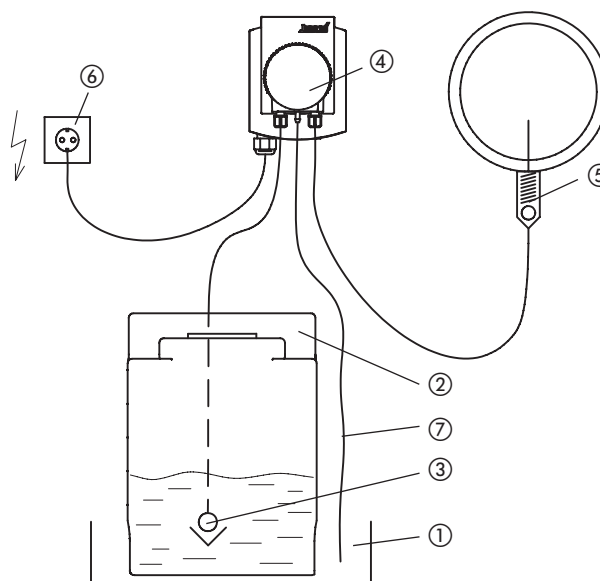
- Peristaltic pump 2.8 l/hr, incl. power cable
- Profile rail for mounting, L= 95 mm
- Mounting material for wall fastening

### Accessories

In addition to the peristaltic pump, the following accessories are available for the assembly and operation:

Description	Order no.
Profile rail for mounting of several pumps in a row	
L= 330 mm (up to 3 pumps)	38314
L= 660 mm (up to 6 pumps)	38317
L= 990 mm (up to 9 pumps)	38318
Tubing for suction side PVC, 4/6 mm	97181
Tubing for discharge side PE, 4/6 mm	97128
Suction line SA, DN 4, PVC, L=2500 mm	12224451
Injection fitting IR DN 4, G 1/2 - 4/6 with injection pipe 100 mm	12300001
Injection fitting SKD DN 4, G 1/2 - 4/6 with injection tubing 100 mm (self-cleaning)	12300010

### Installation example



### Legend

- ① Collecting tray
- ② Chemical canister
- ③ Suction line with check valve
- ④ Peristaltic pump 2.8 l/hr
- ⑤ Injection point with check valve
- ⑥ Socket with fuse pin
- ⑦ Drain connection of the peristaltic pump

## General Description

Designed to meet the demanding requirements of chemical injection and dispensing applications.

Exceptional self-priming capabilities make the PERIDOS series an ideal choice for hard-to-handle chemicals such as sodium hypochlorite, hydrogen peroxide or viscous polymers. An extremely wide range of flow outputs can be obtained by simply changing the tubing size.

One size pumphead accepts five standard tubing sizes. The spring loaded pumphead rollers provide extended tubing life and automatically compensate for minor variations in pump tube wall thickness. The PERIDOS Series pump system allows you to mount the controller on the wall...away from the harsh environment.

An optional tubing rupture detector will automatically shut down the PERIDOS pump and signal an alarm in the event of a tubing leak. Used in conjunction with the unique PERIDOS sealed pump design the Lutz-JESCO Tubing Rupture Detector helps to protect operators and other equipment from potentially dangerous fumes and chemicals.

- Flows to 50.2 GPH, Pressures to 100 psi.
- Rugged industrial drive uses standard 56C face motors.
- Seal-less pumping technology.
- Self-priming – suction lifts to 30 ft.
- No check valves – few moving parts.
- Various long life chemical resistant tubing options available.
- Dry run capability.
- Remote wall mount controller with backlit digital display & integral keypad in NEMA 4 enclosure.
- User selectable manual or automatic control.
- Automatic control via 0-10VDC, 4-20mA or RS485 inputs.
- Integral pump run timer to monitor tubing life.

### Motor

- 1/3 HP TEFC Inverter duty.
- Standard 56C face mounting flange.
- Explosion proof & washdown motors available.

### PERIDOS Controller

- Wall mount with two-line backlit LCD display.
- Integral 8 button keypad.
- Selectable manual or automatic control via 0-10 VDC or 4-20 mA.



- RS-485 serial communications.
- Remote start/stop input.
- 4-20mA speed output signal.
- Pump run timer.
- NEMA 4 enclosure.
- 115 VAC input, 230 VAC 3-phase optional

### PERIDOS E Controller

- Wall or pump mount with LED display.
- Integral 6 button keypad.
- Selectable manual or automatic control via 0-10 VDC or 4-20 mA.
- Remote start/stop capabilities.
- 4-20mA speed output signal.
- NEMA 4X enclosure.
- 115 VAC input, 230VAC 3-phase optional.

### Mechanical

- Pump weight: 49 lbs.
- Controller weight: 3 lbs.
- Pump Finish: Stainless Steel

### Tubing Descriptions

FLOPRENE™ - Thermoplastic elastomer  
 TYGOPRENE XL-60 - PVC based thermoplastic  
 NORPRENE<sup>1</sup> - Thermoplastic elastomer  
 CHEMSURE<sup>2</sup> - Thermalset rubber

<sup>1</sup> Registered Trademark of Saint-Gobain Performance Plastics

<sup>2</sup> Registered Trademark of W.L. Gore & Associates

## Tubing Capacity Chart: PERIDOS

Estimated Pumping capacity

Tubing No.	Tubing Size (bore)	0.6-90 RPM	1.8-220 RPM	ml/rev
#119	1.6 mm (1/16")	0.27-41 (0.004-0.64 gph)	0.81-99 (0.013-1.57 gph)	0.45
#120	3.2 mm (1/8")	1.13-169 (0.02-2.68 gph)	3.38-414 (0.05-6.56 gph)	1.88
#15	4.8 mm (3/16")	2.46-369 (0.04-5.85 gph)	7.38-902 (0.12-14.30 gph)	4.1
#24	6.4 mm (1/4")	4.44-666 (0.07-10.56 gph)	13.32-1628 (0.21-25.80 gph)	7.4
#35 & #121	8.0 mm (5/16")	6.60-990 (0.10-15.69 gph)	19.80-2420 (0.31-38.36 gph)	11
#36 & #122	9.6 mm (3/8")	8.64-1296 (0.14-20.54 gph)	25.92-3168 (0.41-50.21 gph)	14.4

## Constructive Dimensions

